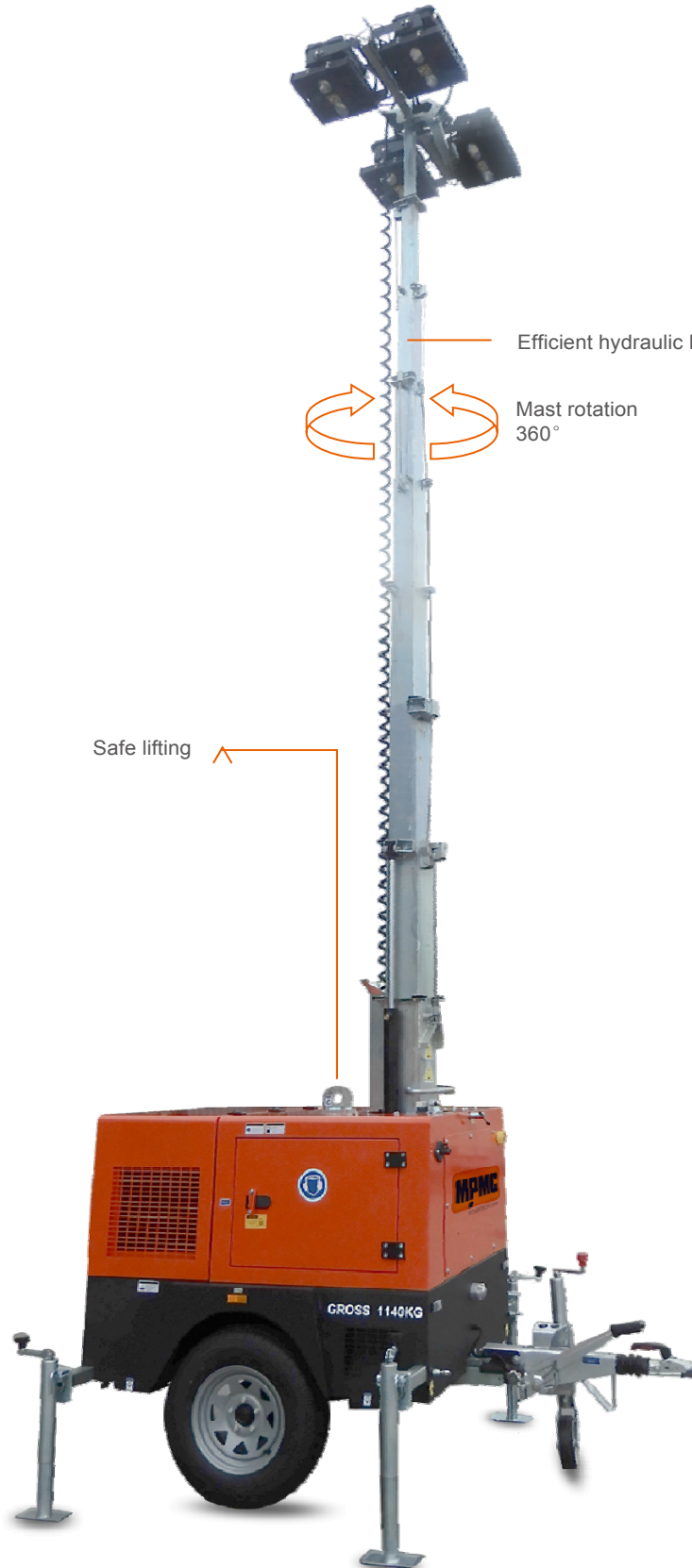
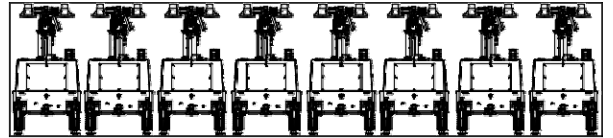


## MLT4KD-4000LF

Powered by Kubota

8U / 40 'HC. CONTAINER



Efficient hydraulic lifting system with rapid telescopic deployment

Mast rotation 360°

Safe lifting

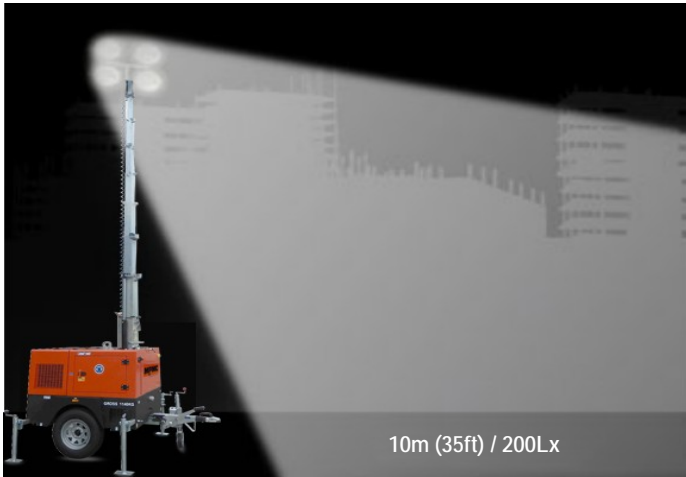
GROSS 1140KG

### ✓ Highlights

- Less fuel consumption. Longer run-time
- Simple control system
- High efficiency
- Sturdy and durable
- Max height 9m



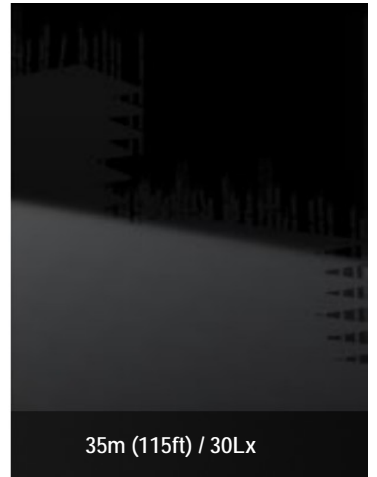
GROSS 1140KG



10m (35ft) / 200Lx



25m (80ft) / 100Lx



35m (115ft) / 30Lx

## Lighting Tower Technical Data

Power Package Rated Power	6.0KW	
Number & Power of Lamp	4×1000W	
Rated Frequency/ Speed	60Hz /1800 rpm	50Hz/1500 rpm
Rated Voltage	AC 240V	AC 230V
Noise	65dB(A) @7M	
Mast-Maximum Height	9M	
Mast Lifting & Extension	Manual Operation	
Fuel level gauge	Electronic	
Tower leg type	Manual	
Trailer Load bearing	1200KG	
Trailer type	Off road type / On road type	
AUX. Power output	16A/3P Socket	
Rotation angle range of light	NA	
Wind resistance grade	65m/h	
Recommended use environment	Level ground	

## Lamp

Number×Power	4×1000W	
Lamp type	Metal halide lamp	
Protection Class	IP67	
Luminous Efficiency	110Lm/W	
Color Temperature	5000 K	
Voltage	AC 240V	AC 230V
Lamp service life	50000hrs	

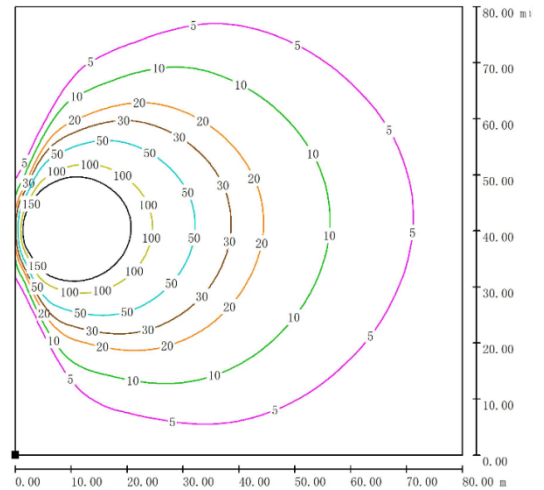
## Control System

Controller Model	MALC404
------------------	---------

## Dimension and Weight

Max Overall Dimension (L×W×H)	2860×2130×9000 mm
Container loading Dimension (L×W×H)	3000×1150×2126 mm
Tank Capacity / Running Hr.	100 L / 50 hrs.
Weight	750kg
The loading capacity(40'HC)	8 Sets

Note: Specifications and illustrations are subject to revision without notice.



## Environmental Conditions

- Ambient temperature: +5°C~+40°C
- Altitude: ≤1000m
- Note:** Please contact us if operating environmental conditions required do not go with the guidance.

## Factory Inspection

- Complete design and quality inspection
- 30 mins full load test
- Function testing
- Protection testing

## Painting Process

- MPMC has the most advanced automatic spraying / powder coating production line, and is equipped with various sandblasting equipment to ensure higher quality.
- Canopy painting: HenKel pretreatment process and world famous brand AkzoNobel powder.
- Base Frame painting: Sandblasting process and AkzoNobel powder (Hempel paint is optional).



## Engine Specifications

Engine Model	D1105-E2BG-CHN-1
Manufacturer	Kubota
Emission	China off road stage II
Number of Cylinders	3
Cycle	4 Stroke
Aspiration	Naturally
Prime Power / Speed (Gross)	10.1KW / 1800RPM ; 9.5KW/1500RPM
Lube-oil Capability	5.1L
Fuel consumption	205g/kWh
Starter motor/ Alternator	1.0KW/12V

- Heavy duty diesel engine
- Anti-vibration mount
- Replaceable fuel filter, oil filter & air filter
- Cooling radiator and fan
- Starter battery (with lead acid) including rack and cables
- Flexible fuel connection hoses
- Exhaust silencer and bellows
- Operation manuals and circuit diagram documents

## Alternator Specifications

Alternator Model	DP06-60	DP06-50
Manufacturer	Dingol	
Rated Output Power	6.0KW	
Alternator Type	Brushless	
Rated Voltage	AC 240V	AC 230V
Rated Speed	1800 RPM	1500 RPM
IP Protection	IP23	
Insulation Grade	H	

## OPTIONS

<input type="checkbox"/> Jacket water heater	<input type="checkbox"/> Manual pump
<input type="checkbox"/> Lub-oil heater	<input type="checkbox"/> Smartgen controller
<input type="checkbox"/> ABB/Schneider MCB	<input type="checkbox"/> Sockets
<input type="checkbox"/> Battery charger	<input type="checkbox"/> Larger fuel tank



**MPMC POWERTECH CORP.**  
sales@mpmc-china.com | www.mpmc-china.com

Photographs are for illustrative purposes only and may not reflect final configuration.

Follow us

- <https://www.facebook.com/mpmcgroup>
- <https://www.linkedin.com/company/mpmcpowertech/>
- <https://www.youtube.com/user/MPMCGenerator>

All information in this document is substantially correct at time of printing and may be altered subsequently. Final weight and dimensions will depend on completed specification.